

## Product datasheet for **TA363042**

### Ldhb Rabbit Polyclonal Antibody

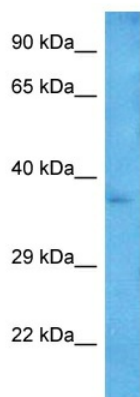
#### Product data:

Product Type:	Primary Antibodies
Applications:	WB
Reactivity:	Mouse
Host:	Rabbit
Clonality:	Polyclonal
Immunogen:	The immunogen is a synthetic peptide directed towards the middle region of mouse LDHB
Specificity:	<b>Expected reactivity:</b> Mouse
Formulation:	Liquid. Purified antibody supplied in 1x PBS buffer with 0.09% (w/v) sodium azide and 2% sucrose. <i>Note that this product is shipped as lyophilized powder to China customers.</i>
Concentration:	lot specific
Purification:	Affinity purified
Conjugation:	Unconjugated
Storage:	For short term use, store at 2-8°C up to 1 week. For long term storage, store at -20°C in small aliquots to prevent freeze-thaw cycles.
Stability:	Shelf life: one year from despatch.
Predicted Protein Size:	36 kDa
Gene Name:	lactate dehydrogenase B
Database Link:	<a href="#">NP_001289694.1</a> <a href="#">Entrez Gene 16832 Mouse P16125</a>
Background:	This gene encodes the B subunit of lactate dehydrogenase enzyme, which catalyzes the interconversion of pyruvate and lactate with concomitant interconversion of NADH and NAD <sup>+</sup> in a post-glycolysis process. Alternatively spliced transcript variants have also been found for this gene. Recent studies have shown that a C-terminally extended isoform is produced by use of an alternative in-frame translation termination codon via a stop codon readthrough mechanism, and that this isoform is localized in the peroxisomes. Pseudogenes have been identified on chromosomes 1 and 19.



[View online »](#)

Synonyms: LDH-B; LDH-H; OTTHUMP00000165229; TRG-5

**Product images:**

Host: Rabbit  
Target Name: Ldhb  
Sample Type: Mouse Stomach Lysate  
Antibody Dilution: 1.0µg/ml

Host: Rabbit  
Target Name: LDHB  
Sample Tissue: Mouse Stomach lysates  
Antibody Dilution: 1ug/ml