

Product datasheet for **TA363028**

Pemt Rabbit Polyclonal Antibody

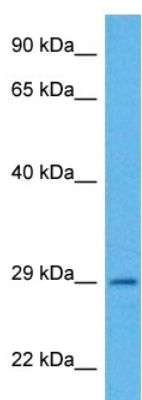
Product data:

Product Type:	Primary Antibodies
Applications:	WB
Reactivity:	Mouse
Host:	Rabbit
Clonality:	Polyclonal
Immunogen:	The immunogen is a synthetic peptide directed towards the middle region of mouse PEMT
Specificity:	Expected reactivity: Mouse
Formulation:	Liquid. Purified antibody supplied in 1x PBS buffer with 0.09% (w/v) sodium azide and 2% sucrose. <i>Note that this product is shipped as lyophilized powder to China customers.</i>
Concentration:	lot specific
Purification:	Affinity purified
Conjugation:	Unconjugated
Storage:	For short term use, store at 2-8°C up to 1 week. For long term storage, store at -20°C in small aliquots to prevent freeze-thaw cycles.
Stability:	Shelf life: one year from despatch.
Predicted Protein Size:	26 kDa
Gene Name:	phosphatidylethanolamine N-methyltransferase
Database Link:	NP_001276940.1 Entrez Gene 18618 Mouse Q61907-2
Background:	Catalyzes the three sequential steps of the methylation pathway of phosphatidylcholine biosynthesis, the SAM-dependent methylation of phosphatidylethanolamine (PE) to phosphatidylmonomethylethanolamine (PMME), PMME to phosphatidyl dimethylethanolamine (PDME), and PDME to phosphatidylcholine (PC).
Synonyms:	MGC2483; OTTHUMP00000065537; PEAMT; PEMPT; PEMT2; PNMT



[View online »](#)

Product images:



Host: Rabbit
Target Name: Pemt
Sample Type: Mouse Small Intestine Lysate
Antibody Dilution: 1.0 μ g/ml

Host: Rabbit
Target Name: PEMT
Sample Tissue: Mouse Small Intestine lysates
Antibody Dilution: 1 μ g/ml