

Product datasheet for **TA363026**

MBL2 Rabbit Polyclonal Antibody

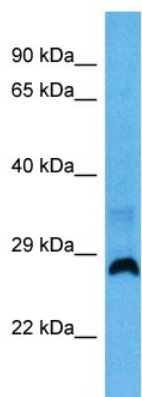
Product data:

Product Type:	Primary Antibodies
Applications:	WB
Reactivity:	Mouse
Host:	Rabbit
Clonality:	Polyclonal
Immunogen:	The immunogen is a synthetic peptide directed towards the middle region of mouse MBL2
Specificity:	Expected reactivity: Mouse
Formulation:	Liquid. Purified antibody supplied in 1x PBS buffer with 0.09% (w/v) sodium azide and 2% sucrose. <i>Note that this product is shipped as lyophilized powder to China customers.</i>
Concentration:	lot specific
Purification:	Affinity purified
Conjugation:	Unconjugated
Storage:	For short term use, store at 2-8°C up to 1 week. For long term storage, store at -20°C in small aliquots to prevent freeze-thaw cycles.
Stability:	Shelf life: one year from despatch.
Predicted Protein Size:	26 kDa
Gene Name:	mannose-binding lectin (protein C) 2
Database Link:	NP_034906.1 Entrez Gene 17195 Mouse P39039
Background:	Calcium-dependent lectin involved in innate immune defense. Binds mannose, fucose and N-acetylglucosamine on different microorganisms and activates the lectin complement pathway. Binds to late apoptotic cells, as well as to apoptotic blebs and to necrotic cells, but not to early apoptotic cells, facilitating their uptake by macrophages (By similarity).
Synonyms:	COLEC1; HSMBPC; MBL; MBP; MBP-C; MBP1; MGC116832; MGC116833



[View online »](#)

Product images:



Host: Rabbit
Target Name: Mbl2
Sample Type: Mouse Skeletal Muscle Lysate
Antibody Dilution: 1.0µg/ml

Host: Rabbit
Target Name: MBL2
Sample Tissue: Mouse Skeletal Muscle lysates
Antibody Dilution: 1 ug/ml