

Product datasheet for **TA363023**

Bag1 Rabbit Polyclonal Antibody

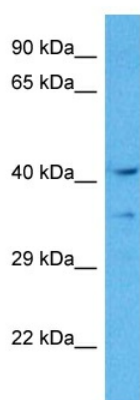
Product data:

Product Type:	Primary Antibodies
Applications:	WB
Reactivity:	Mouse
Host:	Rabbit
Clonality:	Polyclonal
Immunogen:	The immunogen is a synthetic peptide directed towards the middle region of mouse BAG1
Specificity:	Expected reactivity: Mouse
Formulation:	Liquid. Purified antibody supplied in 1x PBS buffer with 0.09% (w/v) sodium azide and 2% sucrose. <i>Note that this product is shipped as lyophilized powder to China customers.</i>
Concentration:	lot specific
Purification:	Affinity purified
Conjugation:	Unconjugated
Storage:	For short term use, store at 2-8°C up to 1 week. For long term storage, store at -20°C in small aliquots to prevent freeze-thaw cycles.
Stability:	Shelf life: one year from despatch.
Predicted Protein Size:	40 kDa
Gene Name:	BCL2-associated athanogene 1
Database Link:	NP_001165210.1 Entrez Gene 12017 Mouse Q60739
Background:	The oncogene Bcl2 encodes a membrane protein that blocks a step in a pathway leading to apoptosis or programmed cell death. The protein encoded by this gene binds to Bcl2 protein and is referred to as Bcl2-associated athanogene. It enhances the anti-apoptotic effects of Bcl2 and represents a link between growth factor receptors and anti-apoptotic mechanisms. At least two protein isoforms are encoded by this mRNA through the use of a non-AUG (CUG) start site and an alternative, downstream, AUG translation initiation site.
Synonyms:	BAG-1; HAP; RAP46



[View online »](#)

Product images:



Host: Rabbit
Target Name: Bag1
Sample Type: Mouse Lung Lysate
Antibody Dilution: 1.0 μ g/ml

Host: Rabbit
Target Name: BAG1
Sample Tissue: Mouse Lung lysates
Antibody Dilution: 1 μ g/ml