

## Product datasheet for **TA363015**

### Thra Rabbit Polyclonal Antibody

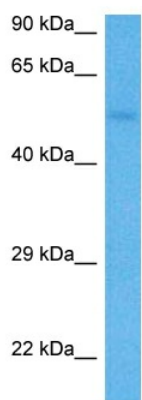
#### Product data:

Product Type:	Primary Antibodies
Applications:	WB
Reactivity:	Mouse
Host:	Rabbit
Clonality:	Polyclonal
Immunogen:	The immunogen is a synthetic peptide directed towards the N terminal region of mouse THRA
Specificity:	<b>Expected reactivity:</b> Mouse
Formulation:	Liquid. Purified antibody supplied in 1x PBS buffer with 0.09% (w/v) sodium azide and 2% sucrose. <i>Note that this product is shipped as lyophilized powder to China customers.</i>
Concentration:	lot specific
Purification:	Affinity purified
Conjugation:	Unconjugated
Storage:	For short term use, store at 2-8°C up to 1 week. For long term storage, store at -20°C in small aliquots to prevent freeze-thaw cycles.
Stability:	Shelf life: one year from despatch.
Predicted Protein Size:	54 kDa
Gene Name:	thyroid hormone receptor alpha
Database Link:	<a href="#">NP_001300912.1</a> <a href="#">Entrez Gene 21833 Mouse</a> <a href="#">P63058</a>
Background:	The protein encoded by this gene is one of several nuclear hormone receptors that bind thyroid hormones such as triiodothyronine and thyroxine with high affinity. The encoded protein is a transcription factor that can activate or repress transcription. Several alternatively spliced transcript variants of this gene have been described, but the full-length nature of some of these variants has not been determined.
Synonyms:	AR7; c-ERBA-1; C-erbA-alpha; EAR-7; EAR-7.1/EAR-7.2; EAR7; ERB-T-1; ERBA; ERBA1; MGC000261; MGC43240; NR1A1; THRA1; THRA2; THRA3



[View online »](#)

## Product images:



Host: Rabbit  
Target Name: Thra  
Sample Type: Mouse Liver Lysate  
Antibody Dilution: 1.0 $\mu$ g/ml

Host: Rabbit  
Target Name: THRA  
Sample Tissue: Mouse Liver lysates  
Antibody Dilution: 1  $\mu$ g/ml