

## Product datasheet for **TA363010**

### Wwox Rabbit Polyclonal Antibody

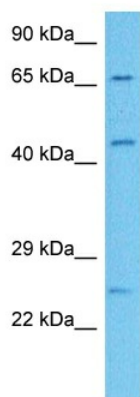
#### Product data:

Product Type:	Primary Antibodies
Applications:	WB
Reactivity:	Mouse
Host:	Rabbit
Clonality:	Polyclonal
Immunogen:	The immunogen is a synthetic peptide directed towards the middle region of mouse WWOX
Specificity:	<b>Expected reactivity:</b> Mouse
Formulation:	Liquid. Purified antibody supplied in 1x PBS buffer with 0.09% (w/v) sodium azide and 2% sucrose. <i>Note that this product is shipped as lyophilized powder to China customers.</i>
Concentration:	lot specific
Purification:	Affinity purified
Conjugation:	Unconjugated
Storage:	For short term use, store at 2-8°C up to 1 week. For long term storage, store at -20°C in small aliquots to prevent freeze-thaw cycles.
Stability:	Shelf life: one year from despatch.
Predicted Protein Size:	45 kDa
Gene Name:	WW domain-containing oxidoreductase
Database Link:	<a href="#">NP_062519.2</a> <a href="#">Entrez Gene 80707 Mouse</a> <a href="#">Q91WL8</a>
Background:	Putative oxidoreductase. Acts as a tumor suppressor and plays a role in apoptosis. May function synergistically with p53/TP53 to control genotoxic stress-induced cell death. Plays a role in TGFB1 signaling and TGFB1-mediated cell death. Inhibits Wnt signaling, probably by sequestering DVL2 in the cytoplasm (By similarity). May also play a role in tumor necrosis factor (TNF)-mediated cell death. Required for normal bone development.
Synonyms:	D16S432E; FOR; FRA16D; HHCMA56; PRO0128; SDR41C1; WOX1



[View online »](#)

## Product images:



Host: Rabbit  
Target Name: Wwox  
Sample Type: Mouse Lung Lysate  
Antibody Dilution: 1.0 $\mu$ g/ml

Host: Rabbit  
Target Name: WWOX  
Sample Tissue: Mouse Lung lysates  
Antibody Dilution: 1 ug/ml