

Product datasheet for **TA363004**

Gsn Rabbit Polyclonal Antibody

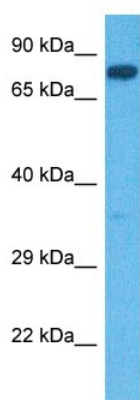
Product data:

Product Type:	Primary Antibodies
Applications:	WB
Reactivity:	Mouse
Host:	Rabbit
Clonality:	Polyclonal
Immunogen:	The immunogen is a synthetic peptide directed towards the middle region of mouse GSN
Specificity:	Expected reactivity: Mouse
Formulation:	Liquid. Purified antibody supplied in 1x PBS buffer with 0.09% (w/v) sodium azide and 2% sucrose. <i>Note that this product is shipped as lyophilized powder to China customers.</i>
Concentration:	lot specific
Purification:	Affinity purified
Conjugation:	Unconjugated
Storage:	For short term use, store at 2-8°C up to 1 week. For long term storage, store at -20°C in small aliquots to prevent freeze-thaw cycles.
Stability:	Shelf life: one year from despatch.
Predicted Protein Size:	85 kDa
Gene Name:	gelsolin
Database Link:	NP_666232.2 Entrez Gene 227753 Mouse P13020
Background:	Calcium-regulated, actin-modulating protein that binds to the plus (or barbed) ends of actin monomers or filaments, preventing monomer exchange (end-blocking or capping). It can promote the assembly of monomers into filaments (nucleation) as well as sever filaments already formed. Plays a role in ciliogenesis.
Synonyms:	ADF; AGEL; Brevin; DKFZp313L0718; gelsolin; OTTHUMP00000162202



[View online »](#)

Product images:



Host: Rabbit
Target Name: Gsn
Sample Type: Mouse Lung Lysate
Antibody Dilution: 1.0 μ g/ml

Host: Rabbit
Target Name: GSN
Sample Tissue: Mouse Lung lysates
Antibody Dilution: 1 μ g/ml