

Product datasheet for **TA363003**

Cap1 Rabbit Polyclonal Antibody

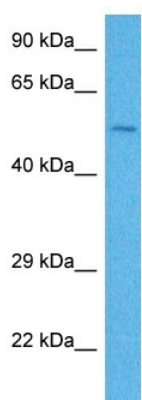
Product data:

Product Type:	Primary Antibodies
Applications:	WB
Reactivity:	Mouse
Host:	Rabbit
Clonality:	Polyclonal
Immunogen:	The immunogen is a synthetic peptide directed towards the middle region of mouse CAP1
Specificity:	Expected reactivity: Mouse
Formulation:	Liquid. Purified antibody supplied in 1x PBS buffer with 0.09% (w/v) sodium azide and 2% sucrose. <i>Note that this product is shipped as lyophilized powder to China customers.</i>
Concentration:	lot specific
Purification:	Affinity purified
Conjugation:	Unconjugated
Storage:	For short term use, store at 2-8°C up to 1 week. For long term storage, store at -20°C in small aliquots to prevent freeze-thaw cycles.
Stability:	Shelf life: one year from despatch.
Predicted Protein Size:	52 kDa
Gene Name:	CAP, adenylate cyclase-associated protein 1 (yeast)
Database Link:	NP_001287996.1 Entrez Gene 12331 Mouse P40124
Background:	The product of this gene plays a role in regulating actin dynamics by binding actin monomers and promoting the turnover of actin filaments. Reduced expression of this gene causes a reduction in actin filament turnover rates, causing multiple defects, including an increase in cell size, stress-fiber alterations, and defects in endocytosis and cell motility. A pseudogene of this gene is found on chromosome 14. Alternative splicing results in multiple transcript variants, but does not affect the protein.
Synonyms:	CAP; CAP1-PEN; OTTHUMP00000004822



[View online »](#)

Product images:



Host: Rabbit
Target Name: Cap1
Sample Type: Mouse Thymus Lysate
Antibody Dilution: 1.0 μ g/ml

Host: Rabbit
Target Name: CAP1
Sample Tissue: Mouse Thymus lysates
Antibody Dilution: 1 μ g/ml