

Product datasheet for **TA363000**

Shb Rabbit Polyclonal Antibody

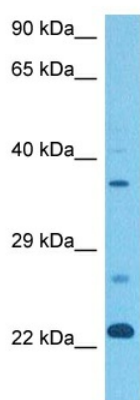
Product data:

Product Type:	Primary Antibodies
Applications:	WB
Reactivity:	Mouse
Host:	Rabbit
Clonality:	Polyclonal
Immunogen:	The immunogen is a synthetic peptide directed towards the middle region of mouse SHB
Specificity:	Expected reactivity: Mouse
Formulation:	Liquid. Purified antibody supplied in 1x PBS buffer with 0.09% (w/v) sodium azide and 2% sucrose. <i>Note that this product is shipped as lyophilized powder to China customers.</i>
Concentration:	lot specific
Purification:	Affinity purified
Conjugation:	Unconjugated
Storage:	For short term use, store at 2-8°C up to 1 week. For long term storage, store at -20°C in small aliquots to prevent freeze-thaw cycles.
Stability:	Shelf life: one year from despatch.
Predicted Protein Size:	23 kDa
Gene Name:	src homology 2 domain-containing transforming protein B
Database Link:	NP_001028478.1 Entrez Gene 230126 Mouse Q6PD21-2
Background:	Adapter protein which regulates several signal transduction cascades by linking activated receptors to downstream signaling components. May play a role in angiogenesis by regulating FGFR1, VEGFR2 and PDGFR signaling. May also play a role in T-cell antigen receptor/TCR signaling, interleukin-2 signaling, apoptosis and neuronal cells differentiation by mediating basic-FGF and NGF-induced signaling cascades. May also regulate IRS1 and IRS2 signaling in insulin-producing cells (By similarity).
Synonyms:	bA3J10.2; RP11-3J10.8



[View online »](#)

Product images:



Host: Rabbit
Target Name: Shb
Sample Type: Mouse Testis Lysate
Antibody Dilution: 1.0 μ g/ml

Host: Rabbit
Target Name: SHB
Sample Tissue: Mouse Testis lysates
Antibody Dilution: 1 μ g/ml