

## Product datasheet for **TA362999**

### Strada Rabbit Polyclonal Antibody

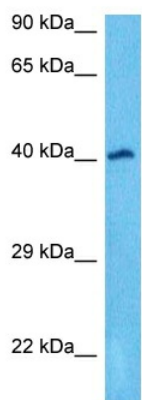
#### Product data:

Product Type:	Primary Antibodies
Applications:	WB
Reactivity:	Mouse
Host:	Rabbit
Clonality:	Polyclonal
Immunogen:	The immunogen is a synthetic peptide directed towards the middle region of mouse STRADA
Specificity:	<b>Expected reactivity:</b> Mouse
Formulation:	Liquid. Purified antibody supplied in 1x PBS buffer with 0.09% (w/v) sodium azide and 2% sucrose. <i>Note that this product is shipped as lyophilized powder to China customers.</i>
Concentration:	lot specific
Purification:	Affinity purified
Conjugation:	Unconjugated
Storage:	For short term use, store at 2-8°C up to 1 week. For long term storage, store at -20°C in small aliquots to prevent freeze-thaw cycles.
Stability:	Shelf life: one year from despatch.
Predicted Protein Size:	42 kDa
Gene Name:	STE20-related kinase adaptor alpha
Database Link:	<a href="#">NP_001239377.1</a> <a href="#">Entrez Gene 72149 Mouse</a> <a href="#">Q3UUJ4-2</a>
Background:	Pseudokinase which, in complex with CAB39/MO25 (CAB39/MO25alpha or CAB39L/MO25beta), binds to and activates STK11/LKB1. Adopts a closed conformation typical of active protein kinases and binds STK11/LKB1 as a pseudosubstrate, promoting conformational change of STK11/LKB1 in an active conformation (By similarity).
Synonyms:	FLJ90524; LYK5; NY-BR-96; PMSE; Stlk; STRAD



[View online »](#)

## Product images:



Host: Rabbit  
Target Name: Strada  
Sample Type: Mouse Brain Lysate  
Antibody Dilution: 1.0 $\mu$ g/ml

Host: Rabbit  
Target Name: STRADA  
Sample Tissue: Mouse Brain lysates  
Antibody Dilution: 1  $\mu$ g/ml