

## Product datasheet for **TA362998**

### Klf6 Rabbit Polyclonal Antibody

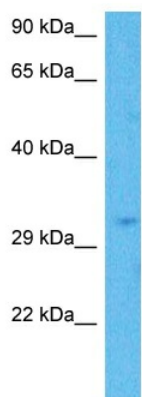
#### Product data:

Product Type:	Primary Antibodies
Applications:	WB
Reactivity:	Mouse
Host:	Rabbit
Clonality:	Polyclonal
Immunogen:	The immunogen is a synthetic peptide directed towards the middle region of mouse KLF6
Specificity:	<b>Expected reactivity:</b> Mouse
Formulation:	Liquid. Purified antibody supplied in 1x PBS buffer with 0.09% (w/v) sodium azide and 2% sucrose. <i>Note that this product is shipped as lyophilized powder to China customers.</i>
Concentration:	lot specific
Purification:	Affinity purified
Conjugation:	Unconjugated
Storage:	For short term use, store at 2-8°C up to 1 week. For long term storage, store at -20°C in small aliquots to prevent freeze-thaw cycles.
Stability:	Shelf life: one year from despatch.
Predicted Protein Size:	31 kDa
Gene Name:	Kruppel-like factor 6
Database Link:	<a href="#">Entrez Gene 23849 Mouse O08584</a>
Background:	Transcriptional activator. Binds a GC box motif. Could play a role in B-cell growth and development (By similarity).
Synonyms:	BCD1; CBA1; COPEB; CPBP; DKFZp686N0199; GBF; PAC1; ST12; ZF9



[View online »](#)

## Product images:



Host: Rabbit  
Target Name: Klf6  
Sample Type: SP2/0 Cell Lysate  
Antibody Dilution: 1.0 $\mu$ g/ml

Host: Rabbit  
Target Name: KLF6  
Sample Tissue: Mouse SP2/0 Whole Cell lysates  
Antibody Dilution: 1 $\mu$ g/ml