

Product datasheet for **TA362996**

Sox3 Rabbit Polyclonal Antibody

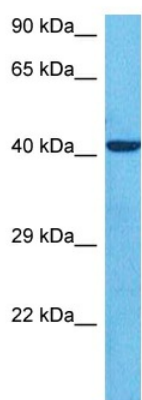
Product data:

Product Type:	Primary Antibodies
Applications:	WB
Reactivity:	Mouse
Host:	Rabbit
Clonality:	Polyclonal
Immunogen:	The immunogen is a synthetic peptide directed towards the middle region of mouse SOX3
Specificity:	Expected reactivity: Mouse
Formulation:	Liquid. Purified antibody supplied in 1x PBS buffer with 0.09% (w/v) sodium azide and 2% sucrose. <i>Note that this product is shipped as lyophilized powder to China customers.</i>
Concentration:	lot specific
Purification:	Affinity purified
Conjugation:	Unconjugated
Storage:	For short term use, store at 2-8°C up to 1 week. For long term storage, store at -20°C in small aliquots to prevent freeze-thaw cycles.
Stability:	Shelf life: one year from despatch.
Predicted Protein Size:	41 kDa
Gene Name:	SRY (sex determining region Y)-box 3
Database Link:	Entrez Gene 20675 Mouse P53784
Background:	Transcription factor required during the formation of the hypothalamo-pituitary axis. May function as a switch in neuronal development. Keeps neural cells undifferentiated by counteracting the activity of proneural proteins and suppresses neuronal differentiation. Required also within the pharyngeal epithelia for craniofacial morphogenesis. Controls a genetic switch in male development. Is necessary for initiating male sex determination by directing the development of supporting cell precursors (pre-Sertoli cells) as Sertoli rather than granulosa cells.
Synonyms:	GHDX; MRGH; panhypopituitarism; PHP; PHPX; SOXB



[View online »](#)

Product images:



Host: Rabbit
Target Name: Sox3
Sample Type: Mouse Brain Lysate
Antibody Dilution: 1.0 μ g/ml

Host: Rabbit
Target Name: SOX3
Sample Tissue: Mouse Brain lysates
Antibody Dilution: 1 ug/ml