

Product datasheet for **TA362995**

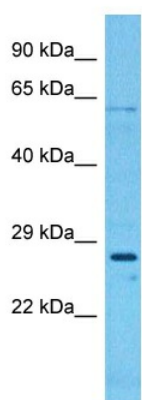
Cd151 Rabbit Polyclonal Antibody

Product data:

Product Type:	Primary Antibodies
Applications:	WB
Reactivity:	Mouse
Host:	Rabbit
Clonality:	Polyclonal
Immunogen:	The immunogen is a synthetic peptide directed towards the middle region of mouse CD151
Specificity:	Expected reactivity: Mouse
Formulation:	Liquid. Purified antibody supplied in 1x PBS buffer with 0.09% (w/v) sodium azide and 2% sucrose. <i>Note that this product is shipped as lyophilized powder to China customers.</i>
Concentration:	lot specific
Purification:	Affinity purified
Conjugation:	Unconjugated
Storage:	For short term use, store at 2-8°C up to 1 week. For long term storage, store at -20°C in small aliquots to prevent freeze-thaw cycles.
Stability:	Shelf life: one year from despatch.
Predicted Protein Size:	27 kDa
Gene Name:	CD151 antigen
Database Link:	NP_001104519.1 Entrez Gene 12476 Mouse O35566
Background:	Essential for the proper assembly of the glomerular and tubular basement membranes in kidney.
Synonyms:	GP27; MER2; PETA-3; PETA3; RAPH; SFA-1; SFA1; Tetraspanin-24; Tspan-24; TSPAN24



[View online »](#)

Product images:

Host: Rabbit
Target Name: Cd151
Sample Type: Mouse Liver Lysate
Antibody Dilution: 1.0 μ g/ml

Host: Rabbit
Target Name: CD151
Sample Tissue: Mouse Liver lysates
Antibody Dilution: 1 μ g/ml