

Product datasheet for **TA362992**

Msra Rabbit Polyclonal Antibody

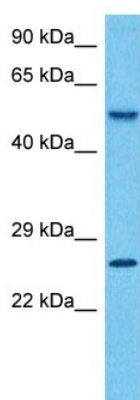
Product data:

Product Type:	Primary Antibodies
Applications:	WB
Reactivity:	Mouse
Host:	Rabbit
Clonality:	Polyclonal
Immunogen:	The immunogen is a synthetic peptide directed towards the middle region of mouse MSRA
Specificity:	Expected reactivity: Mouse
Formulation:	Liquid. Purified antibody supplied in 1x PBS buffer with 0.09% (w/v) sodium azide and 2% sucrose. <i>Note that this product is shipped as lyophilized powder to China customers.</i>
Concentration:	lot specific
Purification:	Affinity purified
Conjugation:	Unconjugated
Storage:	For short term use, store at 2-8°C up to 1 week. For long term storage, store at -20°C in small aliquots to prevent freeze-thaw cycles.
Stability:	Shelf life: one year from despatch.
Predicted Protein Size:	24 kDa
Gene Name:	methionine sulfoxide reductase A
Database Link:	NP_001240641.1 Entrez Gene 110265 Mouse Q9D6Y7-2
Background:	Has an important function as a repair enzyme for proteins that have been inactivated by oxidation. Catalyzes the reversible oxidation-reduction of methionine sulfoxide in proteins to methionine (By similarity).
Synonyms:	PMSR



[View online »](#)

Product images:



Host: Rabbit
Target Name: Msra
Sample Type: Mouse Heart Lysate
Antibody Dilution: 1.0 μ g/ml

Host: Rabbit
Target Name: MSRA
Sample Tissue: Mouse Heart lysates
Antibody Dilution: 1 μ g/ml