

Product datasheet for **TA362991**

Rgr Rabbit Polyclonal Antibody

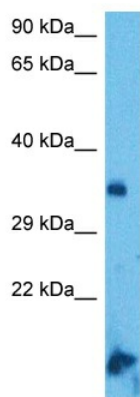
Product data:

Product Type:	Primary Antibodies
Applications:	WB
Reactivity:	Mouse
Host:	Rabbit
Clonality:	Polyclonal
Immunogen:	The immunogen is a synthetic peptide directed towards the middle region of mouse RGR
Specificity:	Expected reactivity: Mouse
Formulation:	Liquid. Purified antibody supplied in 1x PBS buffer with 0.09% (w/v) sodium azide and 2% sucrose. <i>Note that this product is shipped as lyophilized powder to China customers.</i>
Concentration:	lot specific
Purification:	Affinity purified
Conjugation:	Unconjugated
Storage:	For short term use, store at 2-8°C up to 1 week. For long term storage, store at -20°C in small aliquots to prevent freeze-thaw cycles.
Stability:	Shelf life: one year from despatch.
Predicted Protein Size:	32 kDa
Gene Name:	retinal G protein coupled receptor
Database Link:	NP_067315.1 Entrez Gene 57811 Mouse Q9Z2B3
Background:	The gene is a member of the opsin family of G-protein coupled receptors. The encoded protein is expressed in the retina, and acts as a photoisomerase to catalyze the conversion of all-trans-retinal to 11-cis-retinal. Disruption of a similar gene in human is associated with autosomal recessive (arRP) and autosomal dominant retinitis pigmentosa (adRP). Alternative splicing results in multiple transcript variants.
Synonyms:	RGR-opsin; RP44



[View online »](#)

Product images:



Host: Rabbit
Target Name: Rgr
Sample Type: Mouse Brain Lysate
Antibody Dilution: 1.0 μ g/ml

Host: Rabbit
Target Name: RGR
Sample Tissue: Mouse Brain lysates
Antibody Dilution: 1 ug/ml