

Product datasheet for **TA362990**

Sdhd Rabbit Polyclonal Antibody

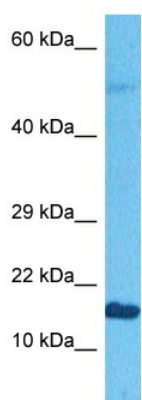
Product data:

Product Type:	Primary Antibodies
Applications:	WB
Reactivity:	Mouse
Host:	Rabbit
Clonality:	Polyclonal
Immunogen:	The immunogen is a synthetic peptide directed towards the middle region of mouse SDHD
Specificity:	Expected reactivity: Mouse
Formulation:	Liquid. Purified antibody supplied in 1x PBS buffer with 0.09% (w/v) sodium azide and 2% sucrose. <i>Note that this product is shipped as lyophilized powder to China customers.</i>
Concentration:	lot specific
Purification:	Affinity purified
Conjugation:	Unconjugated
Storage:	For short term use, store at 2-8°C up to 1 week. For long term storage, store at -20°C in small aliquots to prevent freeze-thaw cycles.
Stability:	Shelf life: one year from despatch.
Predicted Protein Size:	17 kDa
Gene Name:	succinate dehydrogenase complex, subunit D, integral membrane protein
Database Link:	NP_080124.1 Entrez Gene 66925 Mouse Q9CXV1
Background:	Membrane-anchoring subunit of succinate dehydrogenase (SDH) that is involved in complex II of the mitochondrial electron transport chain and is responsible for transferring electrons from succinate to ubiquinone (coenzyme Q).
Synonyms:	CBT1; CII-4; CybS; PGL; PGL1; QPs3; SDH4



[View online »](#)

Product images:



Host: Rabbit
Target Name: Sdhd
Sample Type: SP2/0 Cell Lysate
Antibody Dilution: 1.0 μ g/ml

Host: Rabbit
Target Name: SDHD
Sample Tissue: Mouse SP2/0 Whole Cell lysates
Antibody Dilution: 1 μ g/ml