

Product datasheet for **TA362988**

Gjb2 Rabbit Polyclonal Antibody

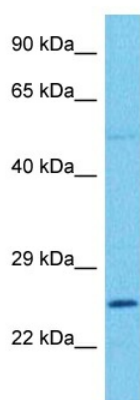
Product data:

Product Type:	Primary Antibodies
Applications:	WB
Reactivity:	Mouse
Host:	Rabbit
Clonality:	Polyclonal
Immunogen:	The immunogen is a synthetic peptide directed towards the N terminal region of mouse GJB2
Specificity:	Expected reactivity: Mouse
Formulation:	Liquid. Purified antibody supplied in 1x PBS buffer with 0.09% (w/v) sodium azide and 2% sucrose. <i>Note that this product is shipped as lyophilized powder to China customers.</i>
Concentration:	lot specific
Purification:	Affinity purified
Conjugation:	Unconjugated
Storage:	For short term use, store at 2-8°C up to 1 week. For long term storage, store at -20°C in small aliquots to prevent freeze-thaw cycles.
Stability:	Shelf life: one year from despatch.
Predicted Protein Size:	24 kDa
Gene Name:	gap junction protein, beta 2
Database Link:	NP_032151.1 Entrez Gene 14619 Mouse Q00977
Background:	One gap junction consists of a cluster of closely packed pairs of transmembrane channels, the connexons, through which materials of low MW diffuse from one cell to a neighboring cell.
Synonyms:	Connexin-26; CX26; DFNA3; DFNA3A; DFNB1; DFNB1A; HID; KID; NSRD1; OTTHUMP00000018094; PPK



[View online »](#)

Product images:



Host: Rabbit
Target Name: Gjb2
Sample Type: Mouse Spleen Lysate
Antibody Dilution: 1.0 μ g/ml

Host: Rabbit
Target Name: GJB2
Sample Tissue: Mouse Spleen lysates
Antibody Dilution: 1 μ g/ml