

Product datasheet for **TA362984**

Bub3 Rabbit Polyclonal Antibody

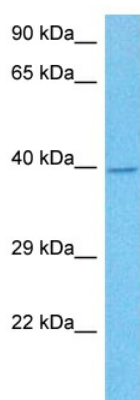
Product data:

Product Type:	Primary Antibodies
Applications:	WB
Reactivity:	Mouse
Host:	Rabbit
Clonality:	Polyclonal
Immunogen:	The immunogen is a synthetic peptide directed towards the N terminal region of mouse BUB3
Specificity:	Expected reactivity: Mouse
Formulation:	Liquid. Purified antibody supplied in 1x PBS buffer with 0.09% (w/v) sodium azide and 2% sucrose. <i>Note that this product is shipped as lyophilized powder to China customers.</i>
Concentration:	lot specific
Purification:	Affinity purified
Conjugation:	Unconjugated
Storage:	For short term use, store at 2-8°C up to 1 week. For long term storage, store at -20°C in small aliquots to prevent freeze-thaw cycles.
Stability:	Shelf life: one year from despatch.
Predicted Protein Size:	37 kDa
Gene Name:	BUB3 mitotic checkpoint protein
Database Link:	NP_001304279.1 Entrez Gene 12237 Mouse Q9WVA3
Background:	This gene encodes a component of the mitotic spindle assembly complex. The encoded protein is involved in the regulation of chromosome segregation during oocyte meiosis. Disruption of this gene results in the accumulation of mitotic errors and is lethal in the embryonic stage. Alternative splicing results in multiple transcript variants.
Synonyms:	BUB3L; hBUB3



[View online »](#)

Product images:



Host: Rabbit
Target Name: Bub3
Sample Type: Mouse Kidney Lysate
Antibody Dilution: 1.0 μ g/ml

Host: Rabbit
Target Name: BUB3
Sample Tissue: Mouse Kidney lysates
Antibody Dilution: 1 ug/ml