

## Product datasheet for **TA362983**

### Hhex Rabbit Polyclonal Antibody

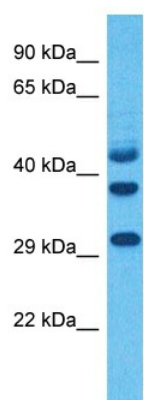
#### Product data:

Product Type:	Primary Antibodies
Applications:	WB
Reactivity:	Mouse
Host:	Rabbit
Clonality:	Polyclonal
Immunogen:	The immunogen is a synthetic peptide directed towards the middle region of mouse HHEX
Specificity:	<b>Expected reactivity:</b> Mouse
Formulation:	Liquid. Purified antibody supplied in 1x PBS buffer with 0.09% (w/v) sodium azide and 2% sucrose. <i>Note that this product is shipped as lyophilized powder to China customers.</i>
Concentration:	lot specific
Purification:	Affinity purified
Conjugation:	Unconjugated
Storage:	For short term use, store at 2-8°C up to 1 week. For long term storage, store at -20°C in small aliquots to prevent freeze-thaw cycles.
Stability:	Shelf life: one year from despatch.
Predicted Protein Size:	29 kDa
Gene Name:	hematopoietically expressed homeobox
Database Link:	<a href="#">NP_032271.1</a> <a href="#">Entrez Gene 15242 Mouse</a> <a href="#">P43120</a>
Background:	Recognizes the DNA sequence 5'-ATTAA-3' (By similarity). Transcriptional repressor. May play a role in hematopoietic differentiation. Establishes anterior identity at two levels; acts early to enhance canonical WNT-signaling by repressing expression of TLE4, and acts later to inhibit NODAL-signaling by directly targeting NODAL.
Synonyms:	HEX; HMPH; HOX11L-PEN; PRH; PRHX



[View online »](#)

## Product images:



Host: Rabbit  
Target Name: Hhex  
Sample Type: Mouse Skeletal Muscle Lysate  
Antibody Dilution: 1.0 $\mu$ g/ml

Host: Rabbit  
Target Name: HHEX  
Sample Tissue: Mouse Skeletal Muscle lysates  
Antibody Dilution: 1  $\mu$ g/ml