

## Product datasheet for **TA362982**

### Rax Rabbit Polyclonal Antibody

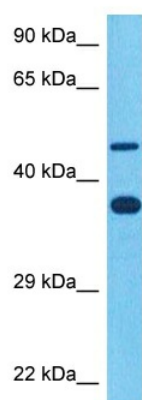
#### Product data:

Product Type:	Primary Antibodies
Applications:	WB
Reactivity:	Mouse
Host:	Rabbit
Clonality:	Polyclonal
Immunogen:	The immunogen is a synthetic peptide directed towards the middle region of mouse RAX
Specificity:	<b>Expected reactivity:</b> Mouse
Formulation:	Liquid. Purified antibody supplied in 1x PBS buffer with 0.09% (w/v) sodium azide and 2% sucrose. <i>Note that this product is shipped as lyophilized powder to China customers.</i>
Concentration:	lot specific
Purification:	Affinity purified
Conjugation:	Unconjugated
Storage:	For short term use, store at 2-8°C up to 1 week. For long term storage, store at -20°C in small aliquots to prevent freeze-thaw cycles.
Stability:	Shelf life: one year from despatch.
Predicted Protein Size:	37 kDa
Gene Name:	retina and anterior neural fold homeobox
Database Link:	<a href="#">NP_038861.2</a> <a href="#">Entrez Gene 19434 Mouse</a> <a href="#">O35602</a>
Background:	Plays a critical role in eye formation by regulating the initial specification of retinal cells and/or their subsequent proliferation. Binds to the photoreceptor conserved element-I (PCE-1/Ret 1) in the photoreceptor cell-specific arrestin promoter (By similarity).
Synonyms:	MCOP3; RX



[View online »](#)

## Product images:



Host: Rabbit  
Target Name: Rax  
Sample Type: Mouse Brain Lysate  
Antibody Dilution: 1.0 $\mu$ g/ml

Host: Rabbit  
Target Name: RAX  
Sample Tissue: Mouse Brain lysates  
Antibody Dilution: 1 $\mu$ g/ml