

## Product datasheet for **TA362975**

### Dusp6 Rabbit Polyclonal Antibody

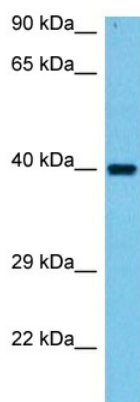
#### Product data:

Product Type:	Primary Antibodies
Applications:	WB
Reactivity:	Mouse
Host:	Rabbit
Clonality:	Polyclonal
Immunogen:	The immunogen is a synthetic peptide directed towards the middle region of mouse DUSP6
Specificity:	<b>Expected reactivity:</b> Mouse
Formulation:	Liquid. Purified antibody supplied in 1x PBS buffer with 0.09% (w/v) sodium azide and 2% sucrose. <i>Note that this product is shipped as lyophilized powder to China customers.</i>
Concentration:	lot specific
Purification:	Affinity purified
Conjugation:	Unconjugated
Storage:	For short term use, store at 2-8°C up to 1 week. For long term storage, store at -20°C in small aliquots to prevent freeze-thaw cycles.
Stability:	Shelf life: one year from despatch.
Predicted Protein Size:	42 kDa
Gene Name:	dual specificity phosphatase 6
Database Link:	<a href="#">NP_080544.1</a> <a href="#">Entrez Gene 67603 Mouse</a> <a href="#">Q9DBB1</a>
Background:	Inactivates MAP kinases. Has a specificity for the ERK family (By similarity). Plays an important role in alleviating acute postoperative pain. Necessary for the normal dephosphorylation of the long-lasting phosphorylated forms of spinal MAPK1/3 and MAP kinase p38 induced by peripheral surgery, which drives the resolution of acute postoperative allodynia. Also important for dephosphorylation of MAPK1/3 in local wound tissue, which further contributes to resolution of acute pain.
Synonyms:	MKP-3; MKP3; PYST1



[View online »](#)

## Product images:



Host: Rabbit  
Target Name: Dusp6  
Sample Type: Mouse Thymus Lysate  
Antibody Dilution: 1.0 $\mu$ g/ml

Host: Rabbit  
Target Name: DUSP6  
Sample Tissue: Mouse Thymus lysates  
Antibody Dilution: 1  $\mu$ g/ml