

Product datasheet for **TA362971**

Naga Rabbit Polyclonal Antibody

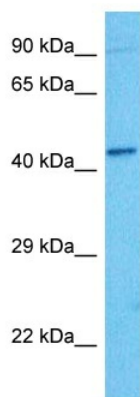
Product data:

Product Type:	Primary Antibodies
Applications:	WB
Reactivity:	Mouse
Host:	Rabbit
Clonality:	Polyclonal
Immunogen:	The immunogen is a synthetic peptide directed towards the middle region of mouse NAGA
Specificity:	Expected reactivity: Mouse
Formulation:	Liquid. Purified antibody supplied in 1x PBS buffer with 0.09% (w/v) sodium azide and 2% sucrose. <i>Note that this product is shipped as lyophilized powder to China customers.</i>
Concentration:	lot specific
Purification:	Affinity purified
Conjugation:	Unconjugated
Storage:	For short term use, store at 2-8°C up to 1 week. For long term storage, store at -20°C in small aliquots to prevent freeze-thaw cycles.
Stability:	Shelf life: one year from despatch.
Predicted Protein Size:	45 kDa
Gene Name:	N-acetyl galactosaminidase, alpha
Database Link:	NP_032695.3 Entrez Gene 17939 Mouse Q9QWR8
Background:	Removes terminal alpha-N-acetylgalactosamine residues from glycolipids and glycopeptides. Required for the breakdown of glycolipids (By similarity).
Synonyms:	alpha-N-acetylgalactosaminidase; D22S674; GALB; OTTHUMP00000199655; OTTHUMP00000199657



[View online »](#)

Product images:



Host: Rabbit
Target Name: Naga
Sample Type: Mouse Spleen Lysate
Antibody Dilution: 1.0 μ g/ml

Host: Rabbit
Target Name: NAGA
Sample Tissue: Mouse Spleen lysates
Antibody Dilution: 1 μ g/ml