

Product datasheet for **TA362970**

Mmp12 Rabbit Polyclonal Antibody

Product data:

Product Type:	Primary Antibodies
Applications:	WB
Reactivity:	Mouse
Host:	Rabbit
Clonality:	Polyclonal
Immunogen:	The immunogen is a synthetic peptide directed towards the middle region of mouse MMP12
Specificity:	Expected reactivity: Mouse
Formulation:	Liquid. Purified antibody supplied in 1x PBS buffer with 0.09% (w/v) sodium azide and 2% sucrose. <i>Note that this product is shipped as lyophilized powder to China customers.</i>
Concentration:	lot specific
Purification:	Affinity purified
Conjugation:	Unconjugated
Storage:	For short term use, store at 2-8°C up to 1 week. For long term storage, store at -20°C in small aliquots to prevent freeze-thaw cycles.
Stability:	Shelf life: one year from despatch.
Predicted Protein Size:	52 kDa
Gene Name:	matrix metalloproteinase 12
Database Link:	NP_001307005.1 Entrez Gene 17381 Mouse P34960



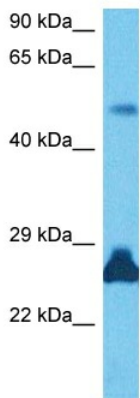
[View online »](#)

Background:

This gene encodes a member of the matrix metalloproteinase family of extracellular matrix-degrading enzymes that are involved in tissue remodeling, wound repair, progression of atherosclerosis and tumor invasion. The encoded preproprotein undergoes proteolytic processing to generate a mature, zinc-dependent endopeptidase enzyme. Mice lacking the encoded protein have a diminished capacity to degrade extracellular matrix components, do not develop emphysema in response to long-term exposure to cigarette smoke, and exhibit impaired clearance and increased mortality upon bacterial infection. This gene is located in a cluster of other matrix metalloproteinase genes on chromosome 9. Alternate splicing generates multiple transcript variants encoding distinct isoforms.

Synonyms:

HME; ME; MGC138506; MME; MMP-12

Product images:

Host: Rabbit
Target Name: Mmp12
Sample Type: Mouse Brain Lysate
Antibody Dilution: 1.0µg/ml

Host: Rabbit
Target Name: MMP12
Sample Tissue: Mouse Brain lysates
Antibody Dilution: 1 µg/ml