

Product datasheet for **TA362968**

Spo11 Rabbit Polyclonal Antibody

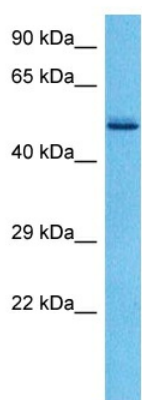
Product data:

Product Type:	Primary Antibodies
Applications:	WB
Reactivity:	Mouse
Host:	Rabbit
Clonality:	Polyclonal
Immunogen:	The immunogen is a synthetic peptide directed towards the middle region of mouse SPO11
Specificity:	Expected reactivity: Mouse
Formulation:	Liquid. Purified antibody supplied in 1x PBS buffer with 0.09% (w/v) sodium azide and 2% sucrose. <i>Note that this product is shipped as lyophilized powder to China customers.</i>
Concentration:	lot specific
Purification:	Affinity purified
Conjugation:	Unconjugated
Storage:	For short term use, store at 2-8°C up to 1 week. For long term storage, store at -20°C in small aliquots to prevent freeze-thaw cycles.
Stability:	Shelf life: one year from despatch.
Predicted Protein Size:	45 kDa
Gene Name:	SPO11 meiotic protein covalently bound to DSB
Database Link:	NP_001077428.1 Entrez Gene 26972 Mouse Q9WTK8
Background:	Isoform 1: Component of a topoisomerase 6 complex specifically required for meiotic recombination. Together with TOP6BL, mediates DNA cleavage that forms the double-strand breaks (DSB) that initiate meiotic recombination. The complex promotes relaxation of negative and positive supercoiled DNA and DNA decatenation through cleavage and ligation cycles. Essential for the phosphorylation of SMC3, HORMAD1 and HORMAD2.
Synonyms:	CT35; MGC39953



[View online »](#)

Product images:



Host: Rabbit
Target Name: Spo11
Sample Type: Mouse Heart Lysate
Antibody Dilution: 1.0 μ g/ml

Host: Rabbit
Target Name: SPO11
Sample Tissue: Mouse Heart lysates
Antibody Dilution: 1 ug/ml