

Product datasheet for **TA362961**

Pura Rabbit Polyclonal Antibody

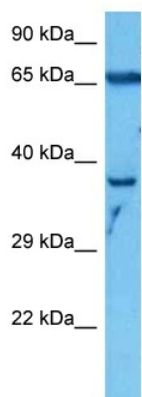
Product data:

Product Type:	Primary Antibodies
Applications:	WB
Reactivity:	Mouse
Host:	Rabbit
Clonality:	Polyclonal
Immunogen:	The immunogen is a synthetic peptide directed towards the middle region of mouse PURA
Specificity:	Expected reactivity: Mouse
Formulation:	Liquid. Purified antibody supplied in 1x PBS buffer with 0.09% (w/v) sodium azide and 2% sucrose.
Concentration:	lot specific
Purification:	Affinity purified
Conjugation:	Unconjugated
Storage:	For short term use, store at 2-8°C up to 1 week. For long term storage, store at -20°C in small aliquots to prevent freeze-thaw cycles.
Stability:	Shelf life: one year from despatch.
Predicted Protein Size:	35 kDa
Gene Name:	purine rich element binding protein A
Database Link:	NP_033015.1 Entrez Gene 19290 Mouse P42669
Background:	This is a probable transcription activator that specifically binds the purine-rich single strand of the PUR element located upstream of the c-Myc gene. May play a role in the initiation of DNA replication and in recombination.
Synonyms:	PUR-ALPHA; PUR1; PURALPHA



[View online »](#)

Product images:



Host: Rabbit
Target Name: Pura
Sample Type: Mouse Kidney Lysate
Antibody Dilution: 1.0 μ g/ml

Host: Rabbit
Target Name: PURA
Sample Tissue: Mouse Kidney lysates
Antibody Dilution: 1 μ g/ml