

Product datasheet for **TA362954**

Etv6 Rabbit Polyclonal Antibody

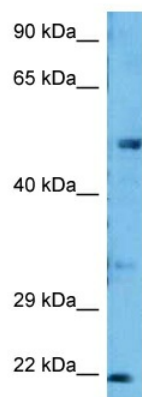
Product data:

Product Type:	Primary Antibodies
Applications:	WB
Reactivity:	Mouse
Host:	Rabbit
Clonality:	Polyclonal
Immunogen:	The immunogen is a synthetic peptide directed towards the middle region of mouse ETV6
Specificity:	Expected reactivity: Mouse
Formulation:	Liquid. Purified antibody supplied in 1x PBS buffer with 0.09% (w/v) sodium azide and 2% sucrose. <i>Note that this product is shipped as lyophilized powder to China customers.</i>
Concentration:	lot specific
Purification:	Affinity purified
Conjugation:	Unconjugated
Storage:	For short term use, store at 2-8°C up to 1 week. For long term storage, store at -20°C in small aliquots to prevent freeze-thaw cycles.
Stability:	Shelf life: one year from despatch.
Predicted Protein Size:	53 kDa
Gene Name:	ets variant 6
Database Link:	NP_031987.3 Entrez Gene 14011 Mouse P97360
Background:	This gene encodes a transcriptional repressor belonging to the ETS family of proteins. Knockout of this gene in mice results in embryonic lethality due to defective angiogenesis. In humans, this gene is often involved in chromosome rearrangements associated with specific cancers. Alternate splicing of this gene results in multiple transcript variants.
Synonyms:	TEL; TEL/ABL; TEL1



[View online »](#)

Product images:



Host: Rabbit
Target Name: Etv6
Sample Type: Mouse Heart Lysate
Antibody Dilution: 1.0 μ g/ml

Host: Rabbit
Target Name: ETV6
Sample Tissue: Mouse Heart lysates
Antibody Dilution: 1 μ g/ml