

Product datasheet for **TA362951**

Sin3a Rabbit Polyclonal Antibody

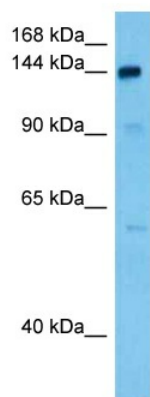
Product data:

Product Type:	Primary Antibodies
Applications:	WB
Reactivity:	Mouse
Host:	Rabbit
Clonality:	Polyclonal
Immunogen:	The immunogen is a synthetic peptide directed towards the middle region of mouse SIN3A
Specificity:	Expected reactivity: Mouse
Formulation:	Liquid. Purified antibody supplied in 1x PBS buffer with 0.09% (w/v) sodium azide and 2% sucrose.
Concentration:	lot specific
Purification:	Affinity purified
Conjugation:	Unconjugated
Storage:	For short term use, store at 2-8°C up to 1 week. For long term storage, store at -20°C in small aliquots to prevent freeze-thaw cycles.
Stability:	Shelf life: one year from despatch.
Predicted Protein Size:	140 kDa
Gene Name:	transcriptional regulator, SIN3A (yeast)
Database Link:	NP_001103820.1 Entrez Gene 20466 Mouse Q60520
Background:	Acts as a transcriptional repressor. Corepressor for REST. Interacts with MXI1 to repress MYC responsive genes and antagonize MYC oncogenic activities. Also interacts with MXD1-MAX heterodimers to repress transcription by tethering SIN3A to DNA. Acts cooperatively with OGT to repress transcription in parallel with histone deacetylation. Involved in the control of the circadian rhythms. Required for the transcriptional repression of circadian target genes, such as PER1, mediated by the large PER complex through histone deacetylation. Cooperates with FOXK1 to regulate cell cycle progression probably by repressing cell cycle inhibitor genes expression.



[View online »](#)

Synonyms: DKFZp434K2235; FLJ90319; KIAA0700

Product images:

Host: Rabbit
Target Name: Sin3a
Sample Type: Mouse Thymus Lysate
Antibody Dilution: 1.0 μ g/ml

Host: Rabbit
Target Name: SIN3A
Sample Tissue: Mouse Thymus lysates
Antibody Dilution: 1 μ g/ml