

## Product datasheet for TA362948

### Cry2 Rabbit Polyclonal Antibody

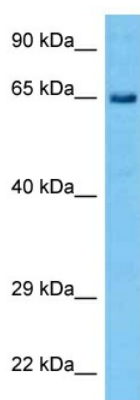
#### Product data:

Product Type:	Primary Antibodies
Applications:	WB
Reactivity:	Mouse
Host:	Rabbit
Clonality:	Polyclonal
Immunogen:	The immunogen is a synthetic peptide directed towards the middle region of mouse CRY2
Specificity:	<b>Expected reactivity:</b> Mouse
Formulation:	Liquid. Purified antibody supplied in 1x PBS buffer with 0.09% (w/v) sodium azide and 2% sucrose. <i>Note that this product is shipped as lyophilized powder to China customers.</i>
Concentration:	lot specific
Purification:	Affinity purified
Conjugation:	Unconjugated
Storage:	For short term use, store at 2-8°C up to 1 week. For long term storage, store at -20°C in small aliquots to prevent freeze-thaw cycles.
Stability:	Shelf life: one year from despatch.
Predicted Protein Size:	65 kDa
Gene Name:	cryptochrome 2 (photolyase-like)
Database Link:	<a href="#">NP_034093.1</a> <a href="#">Entrez Gene 12953 Mouse</a> <a href="#">Q9R194</a>
Background:	This gene encodes a flavin adenine dinucleotide-binding protein that is a key component of the circadian core oscillator complex, which regulates the circadian clock. This gene is upregulated by Clock/Arntl heterodimers but then represses this upregulation in a feedback loop using Per/Cry heterodimers to interact with Clock/Arntl. Polymorphisms in this gene have been associated with altered sleep patterns. The encoded protein is widely conserved across plants and animals.
Synonyms:	FLJ10332; HCRY2; KIAA0658; PHELL2



[View online »](#)

## Product images:



Host: Rabbit  
Target Name: Cry2  
Sample Type: Mouse Spleen Lysate  
Antibody Dilution: 1.0 $\mu$ g/ml

Host: Rabbit  
Target Name: CRY2  
Sample Tissue: Mouse Spleen lysates  
Antibody Dilution: 1 ug/ml