

## Product datasheet for **TA362947**

### Tal1 Rabbit Polyclonal Antibody

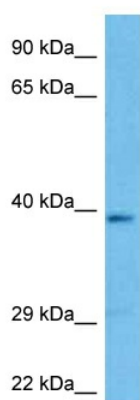
#### Product data:

Product Type:	Primary Antibodies
Applications:	WB
Reactivity:	Mouse
Host:	Rabbit
Clonality:	Polyclonal
Immunogen:	The immunogen is a synthetic peptide directed towards the middle region of mouse TAL1
Specificity:	<b>Expected reactivity:</b> Mouse
Formulation:	Liquid. Purified antibody supplied in 1x PBS buffer with 0.09% (w/v) sodium azide and 2% sucrose. <i>Note that this product is shipped as lyophilized powder to China customers.</i>
Concentration:	lot specific
Purification:	Affinity purified
Conjugation:	Unconjugated
Storage:	For short term use, store at 2-8°C up to 1 week. For long term storage, store at -20°C in small aliquots to prevent freeze-thaw cycles.
Stability:	Shelf life: one year from despatch.
Predicted Protein Size:	36 kDa
Gene Name:	T cell acute lymphocytic leukemia 1
Database Link:	<a href="#">NP_001274317.1</a> <a href="#">Entrez Gene 21349 Mouse</a> <a href="#">P22091</a>
Background:	Implicated in the genesis of hemopoietic malignancies. It may play an important role in hemopoietic differentiation. Serves as a positive regulator of erythroid differentiation.
Synonyms:	bHLHa17; Scl; SCL/tal-1; tal-1



[View online »](#)

## Product images:



Host: Rabbit  
Target Name: Tal1  
Sample Type: Mouse Spleen Lysate  
Antibody Dilution: 1.0 $\mu$ g/ml

Host: Rabbit  
Target Name: TAL1  
Sample Tissue: Mouse Spleen lysates  
Antibody Dilution: 1 $\mu$ g/ml