

Product datasheet for **TA362946**

CCR9 Rabbit Polyclonal Antibody

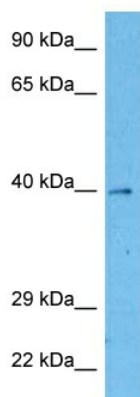
Product data:

Product Type:	Primary Antibodies
Applications:	WB
Reactivity:	Mouse
Host:	Rabbit
Clonality:	Polyclonal
Immunogen:	The immunogen is a synthetic peptide directed towards the C terminal region of mouse CCR9
Specificity:	Expected reactivity: Mouse
Formulation:	Liquid. Purified antibody supplied in 1x PBS buffer with 0.09% (w/v) sodium azide and 2% sucrose. <i>Note that this product is shipped as lyophilized powder to China customers.</i>
Concentration:	lot specific
Purification:	Affinity purified
Conjugation:	Unconjugated
Storage:	For short term use, store at 2-8°C up to 1 week. For long term storage, store at -20°C in small aliquots to prevent freeze-thaw cycles.
Stability:	Shelf life: one year from despatch.
Predicted Protein Size:	40 kDa
Gene Name:	chemokine (C-C motif) receptor 9
Database Link:	NP_001160097.1 Entrez Gene 12769 Mouse Q9WUT7
Background:	Receptor for chemokine SCYA25/TECK. Subsequently transduces a signal by increasing the intracellular calcium ions level.
Synonyms:	CC-CKR-9; CCR-9; CDw199; CMKBR9; GPR-9-6; GPR28



[View online »](#)

Product images:



Host: Rabbit
Target Name: Ccr9
Sample Type: Mouse Heart Lysate
Antibody Dilution: 1.0 μ g/ml

Host: Rabbit
Target Name: CCR9
Sample Tissue: Mouse Heart lysates
Antibody Dilution: 1 μ g/ml