

Product datasheet for **TA362937**

Dcn Rabbit Polyclonal Antibody

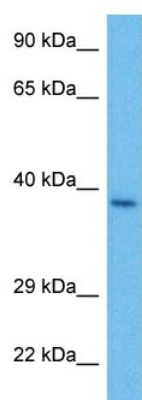
Product data:

Product Type:	Primary Antibodies
Applications:	WB
Reactivity:	Mouse
Host:	Rabbit
Clonality:	Polyclonal
Immunogen:	The immunogen is a synthetic peptide directed towards the middle region of mouse DCN
Specificity:	Expected reactivity: Mouse
Formulation:	Liquid. Purified antibody supplied in 1x PBS buffer with 0.09% (w/v) sodium azide and 2% sucrose. <i>Note that this product is shipped as lyophilized powder to China customers.</i>
Concentration:	lot specific
Purification:	Affinity purified
Conjugation:	Unconjugated
Storage:	For short term use, store at 2-8°C up to 1 week. For long term storage, store at -20°C in small aliquots to prevent freeze-thaw cycles.
Stability:	Shelf life: one year from despatch.
Predicted Protein Size:	38 kDa
Gene Name:	decorin
Database Link:	NP_001177380.1 Entrez Gene 13179 Mouse P28654
Background:	This gene encodes a member of the small leucine-rich proteoglycan (SLRP) family of proteins. The encoded preproprotein is proteolytically processed to generate a mature protein product, which is secreted into the extracellular space to regulate collagen fibril assembly. Homozygous knockout mice for this gene exhibit enhanced tumorigenesis in a liver cancer model, and defects in collagen fibrils, leading to weakened skin and tendons. Alternative splicing results in multiple transcript variants.
Synonyms:	CSCD; decorin; DSPG2; PG-S2; PG40; PGII; PGS2; SLRR1B



[View online »](#)

Product images:



Host: Rabbit
Target Name: Dcn
Sample Type: Mouse Stomach Lysate
Antibody Dilution: 1.0 μ g/ml

Host: Rabbit
Target Name: DCN
Sample Tissue: Mouse Stomach lysates
Antibody Dilution: 1 ug/ml