

Product datasheet for **TA362930**

Cdc25a Rabbit Polyclonal Antibody

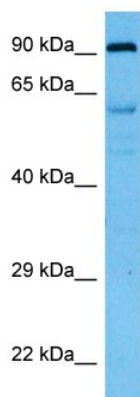
Product data:

| | |
|-------------------------|--|
| Product Type: | Primary Antibodies |
| Applications: | WB |
| Reactivity: | Mouse |
| Host: | Rabbit |
| Clonality: | Polyclonal |
| Immunogen: | The immunogen is a synthetic peptide directed towards the C terminal region of mouse CDC25A |
| Specificity: | Expected reactivity: Mouse |
| Formulation: | Liquid. Purified antibody supplied in 1x PBS buffer with 0.09% (w/v) sodium azide and 2% sucrose. <i>Note that this product is shipped as lyophilized powder to China customers.</i> |
| Concentration: | lot specific |
| Purification: | Affinity purified |
| Conjugation: | Unconjugated |
| Storage: | For short term use, store at 2-8°C up to 1 week. For long term storage, store at -20°C in small aliquots to prevent freeze-thaw cycles. |
| Stability: | Shelf life: one year from despatch. |
| Predicted Protein Size: | 58 kDa |
| Gene Name: | cell division cycle 25A |
| Database Link: | NP_031684.3 Entrez Gene 12530 Mouse P48964 |
| Background: | Tyrosine protein phosphatase which functions as a dosage-dependent inducer of mitotic progression. Directly dephosphorylates CDK1 and stimulates its kinase activity. Also dephosphorylates CDK2 in complex with cyclin E, in vitro (By similarity). Phosphorylation by PIM1 leads to an increase in phosphatase activity (By similarity). |
| Synonyms: | CDC25A2 |



[View online »](#)

Product images:



Host: Rabbit

Target Name: Cdc25a

Sample Type: Mouse Skeletal Muscle Lysate

Antibody Dilution: 1.0 μ g/ml

Host: Rabbit

Target Name: CDC25A

Sample Tissue: Mouse Skeletal Muscle lysates

Antibody Dilution: 1 ug/ml