

## Product datasheet for **TA362929**

### Irf4 Rabbit Polyclonal Antibody

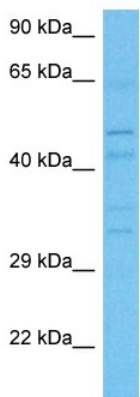
#### Product data:

Product Type:	Primary Antibodies
Applications:	WB
Reactivity:	Mouse
Host:	Rabbit
Clonality:	Polyclonal
Immunogen:	The immunogen is a synthetic peptide directed towards the N terminal region of mouse IRF4
Specificity:	<b>Expected reactivity:</b> Mouse
Formulation:	Liquid. Purified antibody supplied in 1x PBS buffer with 0.09% (w/v) sodium azide and 2% sucrose. <i>Note that this product is shipped as lyophilized powder to China customers.</i>
Concentration:	lot specific
Purification:	Affinity purified
Conjugation:	Unconjugated
Storage:	For short term use, store at 2-8°C up to 1 week. For long term storage, store at -20°C in small aliquots to prevent freeze-thaw cycles.
Stability:	Shelf life: one year from despatch.
Predicted Protein Size:	49 kDa
Gene Name:	interferon regulatory factor 4
Database Link:	<a href="#">NP_038702.1</a> <a href="#">Entrez Gene 16364 Mouse</a> <a href="#">Q64287</a>
Background:	Transcriptional activator. Binds to the interferon-stimulated response element (ISRE) of the MHC class I promoter. Binds the immunoglobulin lambda light chain enhancer, together with PU.1. Probably plays a role in ISRE-targeted signal transduction mechanisms specific to lymphoid cells. Involved in CD8+ dendritic cell differentiation by forming a complex with the BATF-JUNB heterodimer in immune cells, leading to recognition of AICE sequence (5'-TGAnTCA/GAAA-3'), an immune-specific regulatory element, followed by cooperative binding of BATF and IRF4 and activation of genes.



[View online »](#)

Synonyms: IRF-4; LSIRF; MUM1; NF-EM5

**Product images:**

Host: Rabbit  
Target Name: Irf4  
Sample Type: Mouse Liver Lysate  
Antibody Dilution: 1.0µg/ml

Host: Rabbit  
Target Name: IRF4  
Sample Tissue: Mouse Liver lysates  
Antibody Dilution: 1ug/ml