

Product datasheet for TA362925

Gsc Rabbit Polyclonal Antibody

Product data:

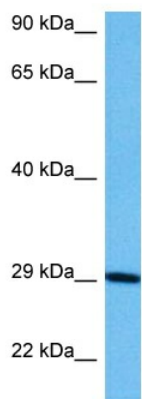
Product Type:	Primary Antibodies
Applications:	WB
Reactivity:	Mouse
Host:	Rabbit
Clonality:	Polyclonal
Immunogen:	The immunogen is a synthetic peptide directed towards the middle region of mouse GSC
Specificity:	Expected reactivity: Mouse
Formulation:	Liquid. Purified antibody supplied in 1x PBS buffer with 0.09% (w/v) sodium azide and 2% sucrose. <i>Note that this product is shipped as lyophilized powder to China customers.</i>
Concentration:	lot specific
Purification:	Affinity purified
Conjugation:	Unconjugated
Storage:	For short term use, store at 2-8°C up to 1 week. For long term storage, store at -20°C in small aliquots to prevent freeze-thaw cycles.
Stability:	Shelf life: one year from despatch.
Predicted Protein Size:	28 kDa
Gene Name:	goosecoid homeobox
Database Link:	NP_034481.1 Entrez Gene 14836 Mouse Q02591
Background:	Regulates chordin (CHRD). May play a role in spatial programming within discrete embryonic fields or lineage compartments during organogenesis (By similarity). In concert with NKX3-2, plays a role in defining the structural components of the middle ear; required for the development of the entire tympanic ring. Goosecoid-expressing regions of the gastrulating mouse egg cylinder have organizer-like activity when transplanted into Xenopus embryos. Probably involved in the regulatory networks that define neural crest cell fate specification and determine mesoderm cell lineages in mammals (By similarity).



[View online »](#)

Synonyms: goosecoid

Product images:



Host: Rabbit
 Target Name: Gsc
 Sample Type: Mouse Stomach Lysate
 Antibody Dilution: 1.0µg/ml

Host: Rabbit
 Target Name: GSC
 Sample Tissue: Mouse Stomach lysates
 Antibody Dilution: 1ug/ml