

## Product datasheet for **TA362922**

### Ccr1 Rabbit Polyclonal Antibody

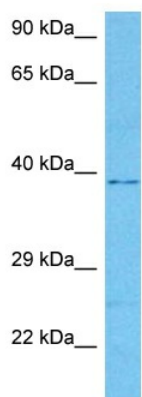
#### Product data:

Product Type:	Primary Antibodies
Applications:	WB
Reactivity:	Mouse
Host:	Rabbit
Clonality:	Polyclonal
Immunogen:	The immunogen is a synthetic peptide directed towards the middle region of mouse CCR1
Specificity:	<b>Expected reactivity:</b> Mouse
Formulation:	Liquid. Purified antibody supplied in 1x PBS buffer with 0.09% (w/v) sodium azide and 2% sucrose. <i>Note that this product is shipped as lyophilized powder to China customers.</i>
Concentration:	lot specific
Purification:	Affinity purified
Conjugation:	Unconjugated
Storage:	For short term use, store at 2-8°C up to 1 week. For long term storage, store at -20°C in small aliquots to prevent freeze-thaw cycles.
Stability:	Shelf life: one year from despatch.
Predicted Protein Size:	39 kDa
Gene Name:	chemokine (C-C motif) receptor 1
Database Link:	<a href="#">NP_034042.3</a> <a href="#">Entrez Gene 12768 Mouse</a> <a href="#">P51675</a>
Background:	Receptor for a C-C type chemokine. Binds to MIP-1-alpha, RANTES, and less efficiently, to MIP-1-beta or MCP-1 and subsequently transduces a signal by increasing the intracellular calcium ions level. Responsible for affecting stem cell proliferation.
Synonyms:	CC-CKR-1; CCR-1; CD191; CKR-1; CKR1; CMKBR1; CMKR1; HM145; MIP-1alpha-R; MIP1aR; RANTES-R; SCYAR1



[View online »](#)

## Product images:



Host: Rabbit  
Target Name: Ccr1  
Sample Type: Mouse Thymus Lysate  
Antibody Dilution: 1.0 $\mu$ g/ml

Host: Rabbit  
Target Name: CCR1  
Sample Tissue: Mouse Thymus lysates  
Antibody Dilution: 1  $\mu$ g/ml