

## Product datasheet for **TA362918**

### Tcf4 Rabbit Polyclonal Antibody

#### Product data:

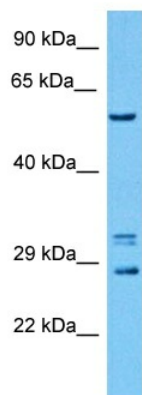
Product Type:	Primary Antibodies
Applications:	WB
Reactivity:	Mouse
Host:	Rabbit
Clonality:	Polyclonal
Immunogen:	The immunogen is a synthetic peptide directed towards the middle region of mouse TCF4
Specificity:	<b>Expected reactivity:</b> Mouse
Formulation:	Liquid. Purified antibody supplied in 1x PBS buffer with 0.09% (w/v) sodium azide and 2% sucrose. <i>Note that this product is shipped as lyophilized powder to China customers.</i>
Concentration:	lot specific
Purification:	Affinity purified
Conjugation:	Unconjugated
Storage:	For short term use, store at 2-8°C up to 1 week. For long term storage, store at -20°C in small aliquots to prevent freeze-thaw cycles.
Stability:	Shelf life: one year from despatch.
Predicted Protein Size:	56 kDa
Gene Name:	transcription factor 4
Database Link:	<a href="#">NP_001077436.1</a> <a href="#">Entrez Gene 21413 Mouse</a> <a href="#">Q60722-2</a>
Background:	Transcription factor that binds to the immunoglobulin enhancer Mu-E5/KE5-motif. Involved in the initiation of neuronal differentiation. Activates transcription by binding to the E box (5'-CANNTG-3'). Isoform 2 inhibits MYOD1 activation of the cardiac alpha-actin promoter. Binds to the E-box present in the somatostatin receptor 2 initiator element (SSTR2-INR) to activate transcription. May have a regulatory function in developmental processes as well as during neuronal plasticity.



[View online »](#)

Synonyms: bHLHb19; E2-2; ITF-2; ITF2; MGC149723; MGC149724; PTHS; SEF-2; SEF2; SEF2-1; SEF2-1A; SEF2-1B

### Product images:



Host: Rabbit  
Target Name: Tcf4  
Sample Type: Mouse Pancreas Lysate  
Antibody Dilution: 1.0 $\mu$ g/ml

Host: Rabbit  
Target Name: TCF4  
Sample Tissue: Mouse Pancreas lysates  
Antibody Dilution: 1 $\mu$ g/ml