

Product datasheet for **TA362912**

IL1b Rabbit Polyclonal Antibody

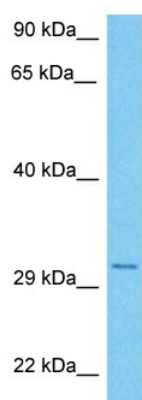
Product data:

Product Type:	Primary Antibodies
Applications:	WB
Reactivity:	Mouse
Host:	Rabbit
Clonality:	Polyclonal
Immunogen:	The immunogen is a synthetic peptide directed towards the middle region of mouse IL1B
Specificity:	Expected reactivity: Mouse
Formulation:	Liquid. Purified antibody supplied in 1x PBS buffer with 0.09% (w/v) sodium azide and 2% sucrose. <i>Note that this product is shipped as lyophilized powder to China customers.</i>
Concentration:	lot specific
Purification:	Affinity purified
Conjugation:	Unconjugated
Storage:	For short term use, store at 2-8°C up to 1 week. For long term storage, store at -20°C in small aliquots to prevent freeze-thaw cycles.
Stability:	Shelf life: one year from despatch.
Predicted Protein Size:	31 kDa
Gene Name:	interleukin 1 beta
Database Link:	NP_032387.1 Entrez Gene 16176 Mouse P10749
Background:	The protein encoded by this gene is a member of the interleukin 1 cytokine family. This cytokine is produced by activated macrophages as a proprotein, which is proteolytically processed to its active form by caspase 1. The encoded protein plays a role in thymocyte proliferation and is involved in the inflammatory response.
Synonyms:	catabolin; IL-1; IL-1B; IL1-BETA; IL1F2; pro-interleukin-1-beta



[View online »](#)

Product images:



Host: Rabbit
Target Name: IL1b
Sample Type: Mouse Brain Lysate
Antibody Dilution: 1.0µg/ml

Host: Rabbit
Target Name: IL1B
Sample Tissue: Mouse Brain lysates
Antibody Dilution: 1 ug/ml