

Product datasheet for **TA362906**

Cx3cr1 Rabbit Polyclonal Antibody

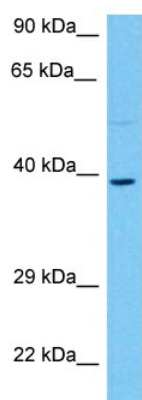
Product data:

Product Type:	Primary Antibodies
Applications:	WB
Reactivity:	Mouse
Host:	Rabbit
Clonality:	Polyclonal
Immunogen:	The immunogen is a synthetic peptide directed towards the middle region of mouse CX3CR1
Specificity:	Expected reactivity: Mouse
Formulation:	Liquid. Purified antibody supplied in 1x PBS buffer with 0.09% (w/v) sodium azide and 2% sucrose. <i>Note that this product is shipped as lyophilized powder to China customers.</i>
Concentration:	lot specific
Purification:	Affinity purified
Conjugation:	Unconjugated
Storage:	For short term use, store at 2-8°C up to 1 week. For long term storage, store at -20°C in small aliquots to prevent freeze-thaw cycles.
Stability:	Shelf life: one year from despatch.
Predicted Protein Size:	38 kDa
Gene Name:	chemokine (C-X3-C motif) receptor 1
Database Link:	NP_034117.3 Entrez Gene 13051 Mouse Q9Z0D9
Background:	Receptor for the CX3C chemokine fractalkine (CX3CL1); binds to CX3CL1 and mediates both its adhesive and migratory functions.
Synonyms:	CCRL1; CMK-BRL-1; CMKBRL1; CMKBRL1; CMKDR1; GPR13; GPRV28; V28



[View online »](#)

Product images:



Host: Rabbit
Target Name: Cx3cr1
Sample Type: Mouse Brain Lysate
Antibody Dilution: 1.0 μ g/ml

Host: Rabbit
Target Name: CX3CR1
Sample Tissue: Mouse Brain lysates
Antibody Dilution: 1 μ g/ml