

## Product datasheet for **TA362899**

### Cxcr2 Rabbit Polyclonal Antibody

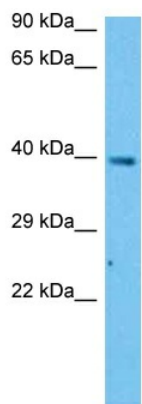
#### Product data:

Product Type:	Primary Antibodies
Applications:	WB
Reactivity:	Rat
Host:	Rabbit
Clonality:	Polyclonal
Immunogen:	The immunogen is a synthetic peptide directed towards the C terminal region of rat CXCR2
Specificity:	<b>Expected reactivity:</b> Rat
Formulation:	Liquid. Purified antibody supplied in 1x PBS buffer with 0.09% (w/v) sodium azide and 2% sucrose. <i>Note that this product is shipped as lyophilized powder to China customers.</i>
Concentration:	lot specific
Purification:	Affinity purified
Conjugation:	Unconjugated
Storage:	For short term use, store at 2-8°C up to 1 week. For long term storage, store at -20°C in small aliquots to prevent freeze-thaw cycles.
Stability:	Shelf life: one year from despatch.
Predicted Protein Size:	39 kDa
Gene Name:	C-X-C motif chemokine receptor 2
Database Link:	<a href="#">NP_058879.1</a> <a href="#">Entrez Gene 29385 Rat P35407</a>
Background:	chemokine receptor that binds IL8, GRO/MGSA and neutrophil activating peptide-2; involved in the inflammatory response.
Synonyms:	CD128; CDw128; Cmkar2; Gpcr16; IL-8rb; IL-8Rh; IL8RA; IL8rb; mL-8RH



[View online »](#)

Product images:



Host: Rabbit  
Target Name: Cxcr2  
Sample Type: Rat Liver Lysate  
Antibody Dilution: 1.0 $\mu$ g/ml

Host: Rabbit  
Target Name: CXCR2  
Sample Tissue: Rat Liver lysates  
Antibody Dilution: 1 $\mu$ g/ml