

Product datasheet for **TA362897**

Nrl Rabbit Polyclonal Antibody

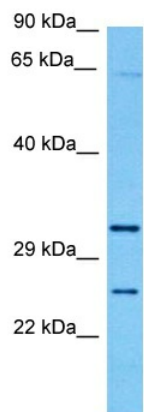
Product data:

Product Type:	Primary Antibodies
Applications:	WB
Reactivity:	Mouse
Host:	Rabbit
Clonality:	Polyclonal
Immunogen:	The immunogen is a synthetic peptide directed towards the middle region of mouse NRL
Specificity:	Expected reactivity: Mouse
Formulation:	Liquid. Purified antibody supplied in 1x PBS buffer with 0.09% (w/v) sodium azide and 2% sucrose.
Concentration:	lot specific
Purification:	Affinity purified
Conjugation:	Unconjugated
Storage:	For short term use, store at 2-8°C up to 1 week. For long term storage, store at -20°C in small aliquots to prevent freeze-thaw cycles.
Stability:	Shelf life: one year from despatch.
Predicted Protein Size:	26 kDa
Gene Name:	neural retina leucine zipper gene
Database Link:	NP_001129546.1 Entrez Gene 18185 Mouse P54846
Background:	This gene encodes a member of the basic leucine zipper domain family of transcription factors. The encoded protein is preferentially expressed in the retina and is necessary for rod photoreceptor development. Alternative splicing results in multiple transcript variants.
Synonyms:	D14S46E; NRL-MAF; OTTHUMP00000027969; OTTHUMP00000164707; RP27



[View online »](#)

Product images:



Host: Rabbit
Target Name: Nrl
Sample Type: Mouse Thymus Lysate
Antibody Dilution: 1.0 μ g/ml

Host: Rabbit
Target Name: NRL
Sample Tissue: Mouse Thymus lysates
Antibody Dilution: 1 μ g/ml