

Product datasheet for **TA362892**

Srm Rabbit Polyclonal Antibody

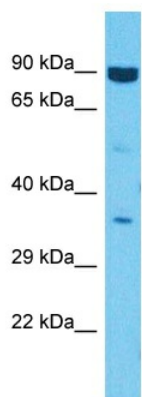
Product data:

Product Type:	Primary Antibodies
Applications:	WB
Reactivity:	Mouse
Host:	Rabbit
Clonality:	Polyclonal
Immunogen:	The immunogen is a synthetic peptide directed towards the middle terminal region of mouse SRM
Specificity:	Expected reactivity: Mouse
Formulation:	Liquid. Purified antibody supplied in 1x PBS buffer with 0.09% (w/v) sodium azide and 2% sucrose. <i>Note that this product is shipped as lyophilized powder to China customers.</i>
Concentration:	lot specific
Purification:	Affinity purified
Conjugation:	Unconjugated
Storage:	For short term use, store at 2-8°C up to 1 week. For long term storage, store at -20°C in small aliquots to prevent freeze-thaw cycles.
Stability:	Shelf life: one year from despatch.
Predicted Protein Size:	34 kDa
Gene Name:	spermidine synthase
Database Link:	NP_033298.1 Entrez Gene 20810 Mouse Q64674
Background:	Catalyzes the production of spermidine from putrescine and decarboxylated S-adenosylmethionine (dcSAM). Has a strong preference for putrescine as substrate, and has very low activity towards 1,3-diaminopropane. Has extremely low activity towards spermidine (By similarity).
Synonyms:	PAPT; SPDSY; SPS1; SRML1



[View online »](#)

Product images:



Host: Rabbit
Target Name: Srm
Sample Type: Mouse Testis Lysate
Antibody Dilution: 1.0 μ g/ml

Host: Rabbit
Target Name: SRM
Sample Tissue: Mouse Testis lysates
Antibody Dilution: 1 ug/ml