

Product datasheet for **TA362886**

Hal Rabbit Polyclonal Antibody

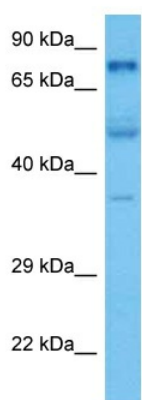
Product data:

Product Type:	Primary Antibodies
Applications:	WB
Reactivity:	Mouse
Host:	Rabbit
Clonality:	Polyclonal
Immunogen:	The immunogen is a synthetic peptide directed towards the middle region of mouse HAL
Specificity:	Expected reactivity: Mouse
Formulation:	Liquid. Purified antibody supplied in 1x PBS buffer with 0.09% (w/v) sodium azide and 2% sucrose. <i>Note that this product is shipped as lyophilized powder to China customers.</i>
Concentration:	lot specific
Purification:	Affinity purified
Conjugation:	Unconjugated
Storage:	For short term use, store at 2-8°C up to 1 week. For long term storage, store at -20°C in small aliquots to prevent freeze-thaw cycles.
Stability:	Shelf life: one year from despatch.
Predicted Protein Size:	72 kDa
Gene Name:	histidine ammonia lyase
Database Link:	NP_034531.1 Entrez Gene 15109 Mouse P35492
Background:	This gene encodes a member of the histidase protein family. The encoded protein is a cytosolic enzyme which catalyzes the first reaction in histidine catabolism. Defects in this protein cause histidinemia, which is characterized by increased histidine in blood, urine, and cerebrospinal fluid.
Synonyms:	HIS; histidase; HSTD



[View online »](#)

Product images:



Host: Rabbit
Target Name: Hal
Sample Type: Mouse Brain Lysate
Antibody Dilution: 1.0 μ g/ml

Host: Rabbit
Target Name: HAL
Sample Tissue: Mouse Brain lysates
Antibody Dilution: 1 μ g/ml