

## Product datasheet for **TA362885**

### Gem Rabbit Polyclonal Antibody

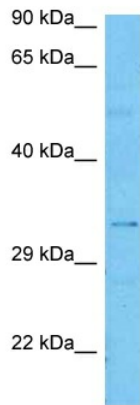
#### Product data:

Product Type:	Primary Antibodies
Applications:	WB
Reactivity:	Mouse
Host:	Rabbit
Clonality:	Polyclonal
Immunogen:	The immunogen is a synthetic peptide directed towards the middle region of mouse GEM
Specificity:	<b>Expected reactivity:</b> Mouse
Formulation:	Liquid. Purified antibody supplied in 1x PBS buffer with 0.09% (w/v) sodium azide and 2% sucrose. <i>Note that this product is shipped as lyophilized powder to China customers.</i>
Concentration:	lot specific
Purification:	Affinity purified
Conjugation:	Unconjugated
Storage:	For short term use, store at 2-8°C up to 1 week. For long term storage, store at -20°C in small aliquots to prevent freeze-thaw cycles.
Stability:	Shelf life: one year from despatch.
Predicted Protein Size:	32 kDa
Gene Name:	GTP binding protein (gene overexpressed in skeletal muscle)
Database Link:	<a href="#">NP_034406.2</a> <a href="#">Entrez Gene 14579 Mouse</a> <a href="#">P55041</a>
Background:	Could be a regulatory protein, possibly participating in receptor-mediated signal transduction at the plasma membrane. Has guanine nucleotide-binding activity but undetectable intrinsic GTPase activity.
Synonyms:	KIR; MGC26294



[View online »](#)

Product images:



Host: Rabbit  
Target Name: Gem  
Sample Type: Mouse Testis Lysate  
Antibody Dilution: 1.0µg/ml

Host: Rabbit  
Target Name: GEM  
Sample Tissue: Mouse Testis lysates  
Antibody Dilution: 1ug/ml