

Product datasheet for **TA362884**

Gstp1 Rabbit Polyclonal Antibody

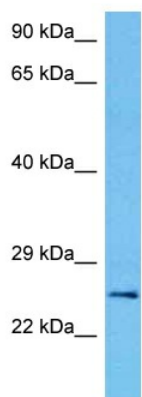
Product data:

Product Type:	Primary Antibodies
Applications:	WB
Reactivity:	Mouse
Host:	Rabbit
Clonality:	Polyclonal
Immunogen:	The immunogen is a synthetic peptide directed towards the middle region of mouse GSTP1
Specificity:	Expected reactivity: Mouse
Formulation:	Liquid. Purified antibody supplied in 1x PBS buffer with 0.09% (w/v) sodium azide and 2% sucrose. <i>Note that this product is shipped as lyophilized powder to China customers.</i>
Concentration:	lot specific
Purification:	Affinity purified
Conjugation:	Unconjugated
Storage:	For short term use, store at 2-8°C up to 1 week. For long term storage, store at -20°C in small aliquots to prevent freeze-thaw cycles.
Stability:	Shelf life: one year from despatch.
Predicted Protein Size:	24 kDa
Gene Name:	glutathione S-transferase, pi 1
Database Link:	NP_038569.1 Entrez Gene 14870 Mouse P19157
Background:	Conjugation of reduced glutathione to a wide number of exogenous and endogenous hydrophobic electrophiles. Can metabolize 1-chloro-2,4-dinitrobenzene. Regulates negatively CDK5 activity via p25/p35 translocation to prevent neurodegeneration (By similarity).
Synonyms:	DFN7; FAEES3; GST3; GSTP; GSTP1-1; PI



[View online »](#)

Product images:



Host: Rabbit
Target Name: Gstp1
Sample Type: Mouse Brain Lysate
Antibody Dilution: 1.0 μ g/ml

Host: Rabbit
Target Name: GSTP1
Sample Tissue: Mouse Brain lysates
Antibody Dilution: 1 μ g/ml