

Product datasheet for **TA362879**

Mpg Rabbit Polyclonal Antibody

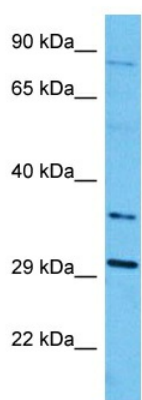
Product data:

Product Type:	Primary Antibodies
Applications:	WB
Reactivity:	Rat
Host:	Rabbit
Clonality:	Polyclonal
Immunogen:	The immunogen is a synthetic peptide directed towards the middle region of rat MPG
Specificity:	Expected reactivity: Rat
Formulation:	Liquid. Purified antibody supplied in 1x PBS buffer with 0.09% (w/v) sodium azide and 2% sucrose. <i>Note that this product is shipped as lyophilized powder to China customers.</i>
Concentration:	lot specific
Purification:	Affinity purified
Conjugation:	Unconjugated
Storage:	For short term use, store at 2-8°C up to 1 week. For long term storage, store at -20°C in small aliquots to prevent freeze-thaw cycles.
Stability:	Shelf life: one year from despatch.
Predicted Protein Size:	35 kDa
Gene Name:	N-methylpurine-DNA glycosylase
Database Link:	Entrez Gene 24561 Rat P23571
Background:	enzyme that cleaves 3-methyladenine and 7-methylguanine residues from DNA.
Synonyms:	AAG; ADPG; anpg; APNG; CRA36.1; MDG; Mid1; PIG11; PIG16



[View online »](#)

Product images:



Host: Rabbit
Target Name: Mpg
Sample Type: Rat Testis Lysate
Antibody Dilution: 1.0 μ g/ml

Host: Rabbit
Target Name: MPG
Sample Tissue: Rat Testis lysates
Antibody Dilution: 1ug/ml