

Product datasheet for **TA362873**

Cd86 Rabbit Polyclonal Antibody

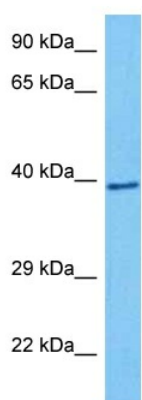
Product data:

Product Type:	Primary Antibodies
Applications:	WB
Reactivity:	Mouse
Host:	Rabbit
Clonality:	Polyclonal
Immunogen:	The immunogen is a synthetic peptide directed towards the middle region of mouse CD86
Specificity:	Expected reactivity: Mouse
Formulation:	Liquid. Purified antibody supplied in 1x PBS buffer with 0.09% (w/v) sodium azide and 2% sucrose. <i>Note that this product is shipped as lyophilized powder to China customers.</i>
Concentration:	lot specific
Purification:	Affinity purified
Conjugation:	Unconjugated
Storage:	For short term use, store at 2-8°C up to 1 week. For long term storage, store at -20°C in small aliquots to prevent freeze-thaw cycles.
Stability:	Shelf life: one year from despatch.
Predicted Protein Size:	35 kDa
Gene Name:	CD86 antigen
Database Link:	NP_062261.3 Entrez Gene 12524 Mouse P42082
Background:	Receptor involved in the costimulatory signal essential for T-lymphocyte proliferation and interleukin-2 production, by binding CD28 or CTLA-4. May play a critical role in the early events of T-cell activation and costimulation of naive T-cells, such as deciding between immunity and anergy that is made by T-cells within 24 hours after activation.
Synonyms:	B7-2; B70; BU63; CD28LG2; FUN-1; LAB72; MGC34413



[View online »](#)

Product images:



Host: Rabbit
Target Name: Cd86
Sample Type: Mouse Kidney Lysate
Antibody Dilution: 1.0 μ g/ml

Host: Rabbit
Target Name: CD86
Sample Tissue: Mouse Kidney lysates
Antibody Dilution: 1 μ g/ml