

Product datasheet for **TA362872**

Mos Rabbit Polyclonal Antibody

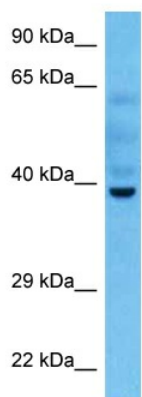
Product data:

Product Type:	Primary Antibodies
Applications:	WB
Reactivity:	Rat
Host:	Rabbit
Clonality:	Polyclonal
Immunogen:	The immunogen is a synthetic peptide directed towards the middle region of rat MOS
Specificity:	Expected reactivity: Rat
Formulation:	Liquid. Purified antibody supplied in 1x PBS buffer with 0.09% (w/v) sodium azide and 2% sucrose. <i>Note that this product is shipped as lyophilized powder to China customers.</i>
Concentration:	lot specific
Purification:	Affinity purified
Conjugation:	Unconjugated
Storage:	For short term use, store at 2-8°C up to 1 week. For long term storage, store at -20°C in small aliquots to prevent freeze-thaw cycles.
Stability:	Shelf life: one year from despatch.
Predicted Protein Size:	37 kDa
Gene Name:	Moloney sarcoma oncogene
Database Link:	Entrez Gene 24559 Rat P00539
Background:	phosphorylates and activates Map2k1; may play a role in meiotic division of spermatocytes and oocytes.
Synonyms:	c-mos; MGC119962; MGC119963; MSV



[View online »](#)

Product images:



Host: Rabbit
Target Name: Mos
Sample Type: Rat Thymus Lysate
Antibody Dilution: 1.0 μ g/ml

Host: Rabbit
Target Name: MOS
Sample Tissue: Rat Thymus lysates
Antibody Dilution: 1 μ g/ml