

Product datasheet for **TA362871**

Sell Rabbit Polyclonal Antibody

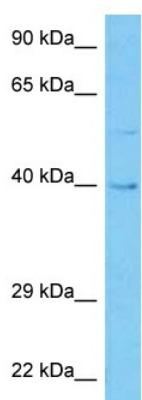
Product data:

| | |
|-------------------------|--|
| Product Type: | Primary Antibodies |
| Applications: | WB |
| Reactivity: | Mouse |
| Host: | Rabbit |
| Clonality: | Polyclonal |
| Immunogen: | The immunogen is a synthetic peptide directed towards the C terminal region of mouse SELL |
| Specificity: | Expected reactivity: Mouse |
| Formulation: | Liquid. Purified antibody supplied in 1x PBS buffer with 0.09% (w/v) sodium azide and 2% sucrose. <i>Note that this product is shipped as lyophilized powder to China customers.</i> |
| Concentration: | lot specific |
| Purification: | Affinity purified |
| Conjugation: | Unconjugated |
| Storage: | For short term use, store at 2-8°C up to 1 week. For long term storage, store at -20°C in small aliquots to prevent freeze-thaw cycles. |
| Stability: | Shelf life: one year from despatch. |
| Predicted Protein Size: | 40 kDa |
| Gene Name: | selectin, lymphocyte |
| Database Link: | NP_035476.1 Entrez Gene 20343 Mouse P18337 |
| Background: | Calcium-dependent lectin that mediates cell adhesion by binding to glycoproteins on neighboring cells. Mediates the adherence of lymphocytes to endothelial cells of high endothelial venules in peripheral lymph nodes. Promotes initial tethering and rolling of leukocytes in endothelia (By similarity). |
| Synonyms: | CD62L; gp90-MEL; hLHRc; LAM-1; LAM1; LECAM1; Leu-8; LEU8; LNHR; LSEL; Lyam-1; LYAM1; PLNHR; TQ1 |



[View online »](#)

Product images:



Host: Rabbit
Target Name: Sell
Sample Type: Mouse Skeletal Muscle Lysate
Antibody Dilution: 1.0 μ g/ml

Host: Rabbit
Target Name: SELL
Sample Tissue: Mouse Skeletal Muscle lysates
Antibody Dilution: 1 ug/ml