

Product datasheet for **TA362870**

Maf Rabbit Polyclonal Antibody

Product data:

Product Type:	Primary Antibodies
Applications:	WB
Reactivity:	Mouse
Host:	Rabbit
Clonality:	Polyclonal
Immunogen:	The immunogen is a synthetic peptide directed towards the middle region of mouse MAF
Specificity:	Expected reactivity: Mouse
Formulation:	Liquid. Purified antibody supplied in 1x PBS buffer with 0.09% (w/v) sodium azide and 2% sucrose. <i>Note that this product is shipped as lyophilized powder to China customers.</i>
Concentration:	lot specific
Purification:	Affinity purified
Conjugation:	Unconjugated
Storage:	For short term use, store at 2-8°C up to 1 week. For long term storage, store at -20°C in small aliquots to prevent freeze-thaw cycles.
Stability:	Shelf life: one year from despatch.
Predicted Protein Size:	35 kDa
Gene Name:	avian musculoaponeurotic fibrosarcoma oncogene homolog
Database Link:	NP_001020748.2 Entrez Gene 17132 Mouse P54841



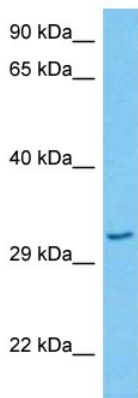
[View online »](#)

Background:

Acts as a transcriptional activator or repressor. Plays a pivotal role in regulating lineage-specific hematopoiesis by repressing ETS1-mediated transcription of erythroid-specific genes in myeloid cells. Required for monocytic, macrophage, osteoclast, podocyte and islet beta cell differentiation. Involved in renal tubule survival and F4/80 maturation. Activates the insulin and glucagon promoters. Together with PAX6, transactivates weakly the glucagon gene promoter through the G1 element. SUMO modification controls its transcriptional activity and ability to specify macrophage fate. Binds element G1 on the glucagon promoter. Involved either as an oncogene or as a tumor suppressor, depending on the cell context.

Synonyms:

c-MAF; MGC71685

Product images:

Host: Rabbit
Target Name: Maf
Sample Type: Mouse Pancreas Lysate
Antibody Dilution: 1.0µg/ml

Host: Rabbit
Target Name: MAF
Sample Tissue: Mouse Pancreas lysates
Antibody Dilution: 1ug/ml