

## Product datasheet for **TA362861**

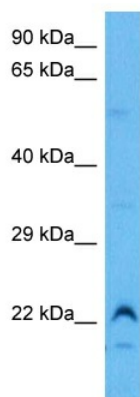
### Sbp Rabbit Polyclonal Antibody

#### Product data:

Product Type:	Primary Antibodies
Applications:	WB
Reactivity:	Mouse
Host:	Rabbit
Clonality:	Polyclonal
Immunogen:	The immunogen is a synthetic peptide directed towards the middle region of mouse SBP
Specificity:	<b>Expected reactivity:</b> Mouse
Formulation:	Liquid. Purified antibody supplied in 1x PBS buffer with 0.09% (w/v) sodium azide and 2% sucrose.
Concentration:	lot specific
Purification:	Affinity purified
Conjugation:	Unconjugated
Storage:	For short term use, store at 2-8°C up to 1 week. For long term storage, store at -20°C in small aliquots to prevent freeze-thaw cycles.
Stability:	Shelf life: one year from despatch.
Predicted Protein Size:	21 kDa
Gene Name:	spermine binding protein
Database Link:	<a href="#">NP_035451.1</a> <a href="#">Entrez Gene 20234 Mouse</a> <a href="#">P15501</a>
Background:	This protein seems to be functional equivalent to rat prostatic spermine-binding protein, which is involved in polyamine binding.
Synonyms:	AV082137; AV082259; p25

[View online »](#)

## Product images:



Host: Rabbit  
Target Name: Sbp  
Sample Type: RAW264.7 Cell Lysate  
Antibody Dilution: 1.0µg/ml

Host: Rabbit  
Target Name: SBP  
Sample Tissue: Mouse RAW264.7 Whole Cell lysates  
Antibody Dilution: 1ug/ml